

## Canterbury Branch of the Royal Society of New Zealand Te Apārangi April 2023 Newsletter

Dear Member,

Many thanks to those who attended the Branch AGM either in person or on Zoom. I would like to thank James Lawson who resigned as our Treasurer for the past two years. James suggestions for moving our funds in term deposits to the RSNZ Endowment Fund has improved the returns, and it will be the goal to build these funds up so we can achieve more. We wish James well for the future.

Also we have had the registration of David Norton, the Branch's representative on the Riccarton Bush Trust. David has represented the Branch well and the Council will be looking at his replacement at the next Council meeting. Again, we wish David well for the future.

We have a new Council and thanks to those who have put their hand up. There are still two vacancies, and the Council will be considering one nomination at the next council meeting. But if you would like to become part of the Council, or know of someone who could be approached please let us know.

Your 2023 council is:

Immediate Past President – Alec Ford

President – Roger Fagg

Vice President – Krishna Dev Bhatta

Honorary Branch Secretary – Rob Cruickshank

Honorary Branch Treasurer – Fiona McGregor

Council – Grant Bennett

– Will Godsoe

– Mike Reid

– Cor Vink

We also voted to kept the subscriptions the same as last year and invoices will be sent out soon.

So, what will the council be looking to achieve?

This year we will be taking a strategic look at many aspects of the Branch, its goals, its purposes, its role in the Canterbury community, how we can be of relevance in Canterbury, and how we can grow the membership, etc. Your input into this is vital for the future direction of the Branch. Vice President, Krishna, will be leading this.

This is important as we look at to see if there are any changes needed to our Constitution as a consequence of the new Incorporated Societies Act.

We will look at the format of **talks** in both Christchurch and Timaru. Attendance in Timaru is good, but attendance in Christchurch is not high, though the podcasts are popular. We are going to look at the **student travel grants** application process and the amount provided. We will be setting up sub-committees for both of these and if you are interested in helping out, please let us know, as this is your Branch and not just the Council's.

...and we will see our new website launched!

Don't forget that you can borrow our CO<sub>2</sub> monitor, which has been in regular use. Contact us and we arrange for you to pick it up. A guide to recommended CO<sub>2</sub> measurements can be found at <https://www.rnz.co.nz/news/in-depth/470690/whose-breath-are-you-breathing>. All we ask in return is that you post your findings on either the branch Facebook page or on Twitter.

Two successful public talks were held in Timaru in the past two months. In march, Rob Lewis from the Marine Studies Centre at Otago gave a talk to South Canterbury Museum's Explorers club in the afternoon and then a second public talk in the evening regarding citizen science and shark monitoring. Overall 60 people attended the two talks. In April, Dr Michael Price gave a talk to an audience of about 90 people on his work with solar panels. His talk was titled "A sunny future: the physics of new material for solar power".



Rob talking to the Explorers club at SC Museum



Dr Michael Price's talk in April at Ara in Timaru

While we are still co-hosting these talks with South Canterbury Museum, the venue has changed from the Council Chambers to Ara Polytechnic. Ara is providing more than we got from the Council with room setup, tea and coffee, which means we have more engagement with those who attend.

## Upcoming Branch Events

### Timaru

At 7.00 pm on Thursday 11 May, in Room TG105/106 at Ara Polytechnic in Timaru, Professor Murray Rea of the Theology Programme at the University of Otago will give a public talk on **Anticipations of the Heavenly Jerusalem in Medieval and Renaissance Cities: An Architectural Study**

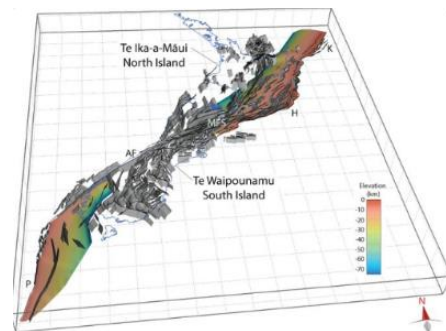
Abstract: The image of the ideal city established by God inspired efforts in Medieval and Renaissance Europe to replicate or foreshadow in earthly cities the heavenly city which Christian imagination envisages. The cities of that time prove to be, therefore, a rich stimulus to the interpretation of those biblical visions in which the New Jerusalem is portrayed in architectural terms. This lecture will offer a study of four characteristics in particular that Christians of the Medieval era supposed would be present in the city of God, and it will show how these characteristics remain evident in the architecture of European cities.

### From other branches and RSNZ Te Apārangi

#### [NZ's famously shaky earthquake environment - now mapped in 3D](#)

Scientists have assembled a three-dimensional picture of New Zealand's famously shaky earthquake environment, with one of the most comprehensive and sophisticated fault models in the world.

**Jamie Morton @NZHerald**



### From The Otago Institute (OI)

The podcast 'Talking About' is up and running.

The Branch has a Facebook group 'Otago Institute for the Arts and Sciences', which anyone interested can join. This will get you all the links and updates.

The show is produced through Otago Access Radio (OAR) and available through all the usual channels and from the OAR and OI websites or from here: <https://oar.org.nz/talking-about/>.

### Other items of interest

#### [Fear and Wonder podcast: how scientists attribute extreme weather events to climate change](#)

*Joelle Gergis, Australian National University; Michael Green, The Conversation*  
Fear and Wonder is a new climate podcast, brought to you by *The Conversation*, and sponsored by the Climate Council. In episode three, we discuss the latest advances in extreme weather attribution.



**[NZ farmers worry about 'carbon leakage' if they have to pay for emissions, but they could benefit from playing the long game](#)**

*Anita Wreford, Lincoln University, New Zealand; John Tobias Saunders, Lincoln University, New Zealand; Meike Guenther, Lincoln University, New Zealand*

The issue of 'carbon leakage' is used to argue against domestic pricing policy that could reduce agricultural production. But New Zealand farmers could benefit if competing countries also take action.

**Lastly**

Remember that you can keep updated by our Facebook page 'Canterbury RSNZ Branch' or on Twitter @CanterburyRSNZ.

If have any suggestions for speakers, field trips, or other ideas, please contact us. I am always willing to discuss anything regarding the branch with you.

Regards,

Roger Fagg  
Branch President  
C: 0272497325  
E: r.fagg@xtra.co.nz